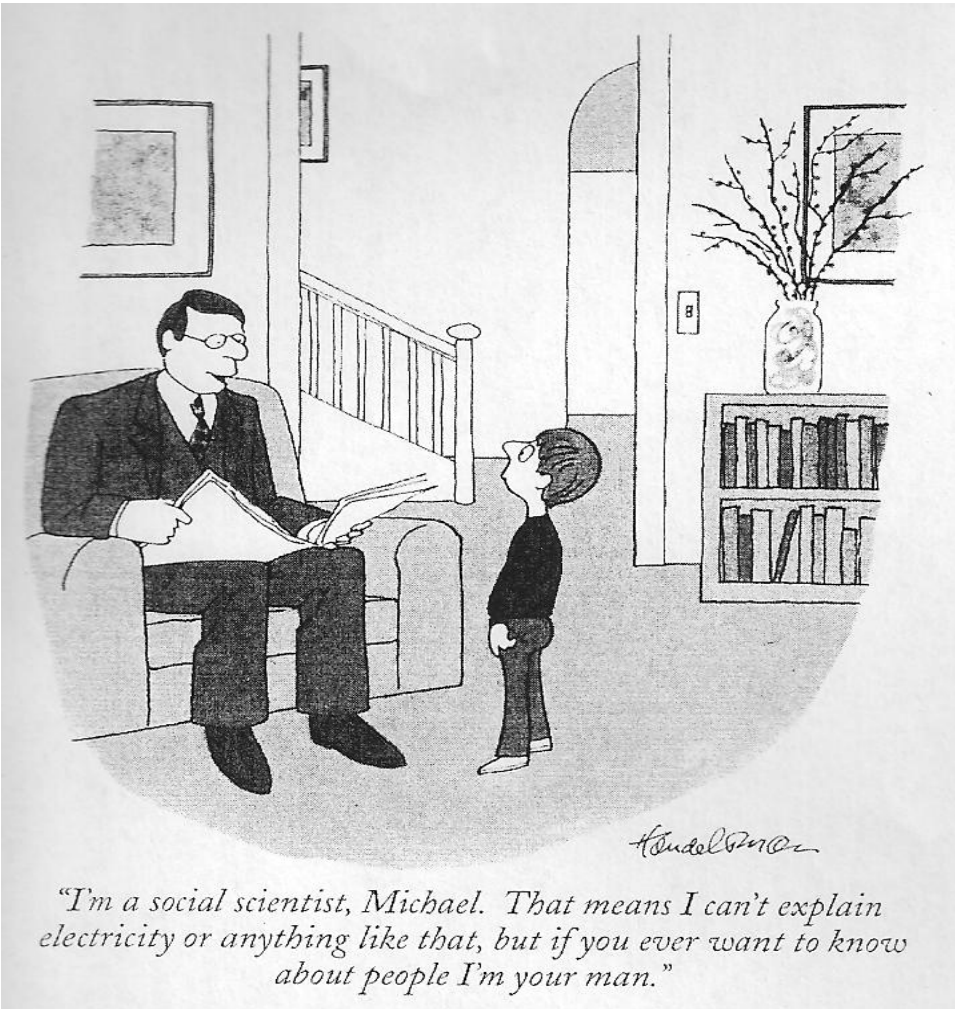

LOYOLA UNIVERSITY MARYLAND

Sociology Department

Loyola Ready

WHAT IS SOCIOLOGY?



Sociology applies systematic research approaches to study human beings in their social contexts in order to **explain behavior.**

WHAT IS SOCIOLOGY?

Sociology is the study of relationships between people as they participate in interactions in groups ranging in size and intimacy, from dyads to families, organizations, communities, nations, and even globally.



WHAT IS SOCIOLOGY?

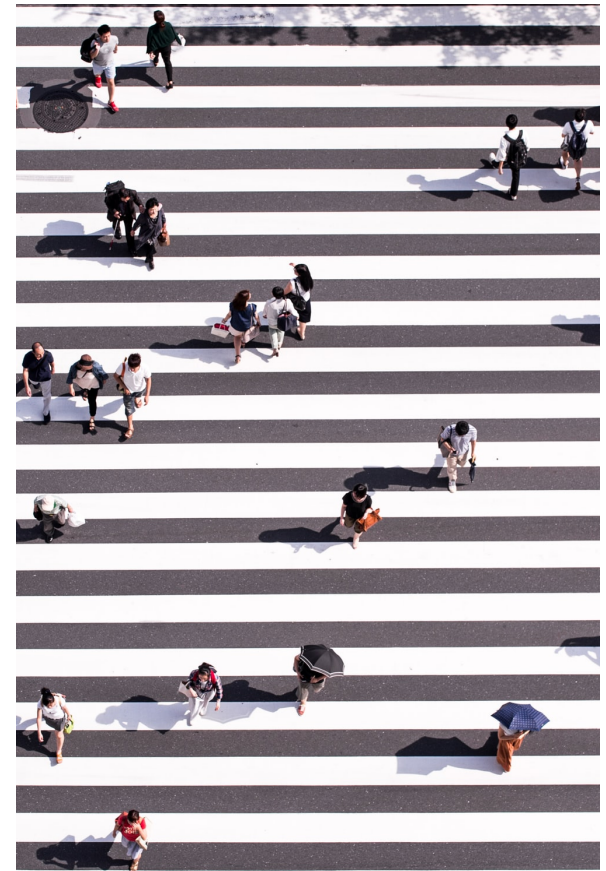
Sociology is an “imagination,” a way of seeing, a way of “connecting biography to history.”

-- C. Wright Mills



“The fascination of sociology lies in the fact that its perspective makes us see in a new light the very world in which we have lived all our lives... It can be said that the first wisdom of sociology is this--***things are not what they seem.***”

-Peter Berger



WHAT IS SOCIOLOGY?

WHY SOCIOLOGY?

- The most important problems of the 21st century will be social. How can we:
 - Avoid war and promote lasting peace?
 - Fight poverty and crime?
 - Advance democracy?
 - Minimize environmental destruction?
 - Advance civil and human rights?
- Sociologists will be on the forefront in the search for answers



WHY SOCIOLOGY?

It's a terrific Interdisciplinary or Double Major combined with:

Biology

Psychology

Political
Science

Languages

Global
Studies

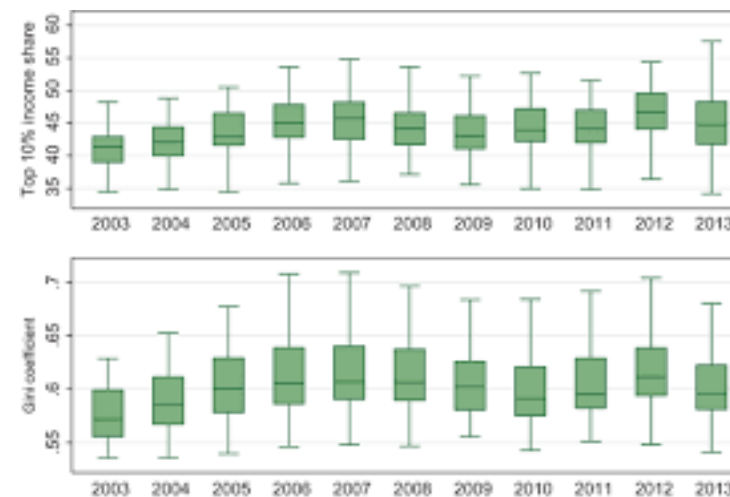
Communication

History

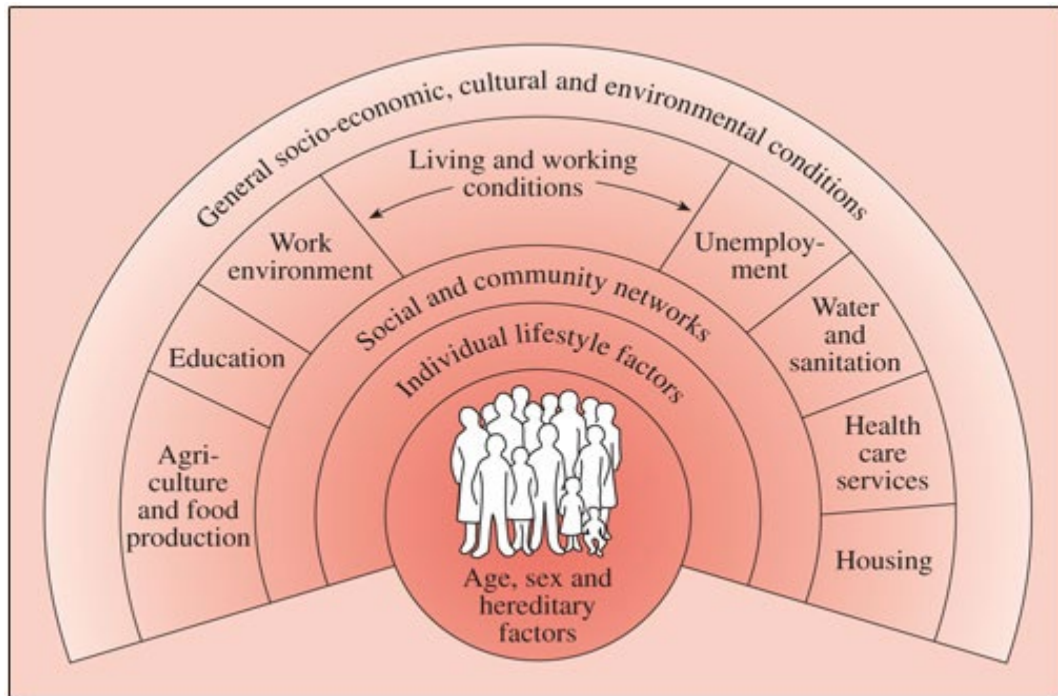
Writing

Speech
Pathology

Statistics



WHY STUDY SOCIOLOGY?



Sociology is now a significant part of the MCAT - Studying sociology is important for students interested in medical fields.

WHAT CAN I DO WITH A BA IN SOCIOLOGY?

Sociology majors pursue employment in many differing fields! Such as ...

- Social research
- Teaching
- Policy analysis & development
- Legal Practice
 - Attorneys & paralegals
- Law enforcement
 - Federal, state, and local
- Non-profit and for-profit management
- Public relations
- Human relations
- Direct client services
- Social work & healthcare



WHAT CAN I DO WITH A BACHELOR'S DEGREE IN SOCIOLOGY?

Pursue graduate studies in a variety of fields!

Sociology MA or PhD

Public Policy

Public Health

Criminology

Education

Peace and
Conflict
Resolution
Studies

Gender Studies

Ethnic Studies

Law

Social Work

THE LOYOLA UNIVERSITY ADVANTAGE

Loyola sociology graduates are ready! They have an advantage competing with other liberal arts students who directly enter the job market – they understand social factors, know how to design, research, and collect data, and have experience in a work setting.

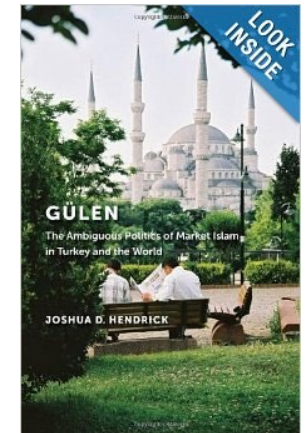
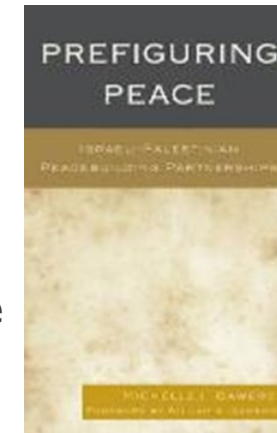




MEET OUR
DEPARTMENT!

SOCIOLOGY FACULTY

- **Dr. Joshua Hendrick.**, Department Chair and Associate Professor
 - Religion; development, social movements; Turkey
- **Dr. H. Lovell Smith,** Assistant Professor
 - Sociology of education, urban populations, and race
- **Dr. Michelle I. Gawerc,** Associate Professor
 - Sociology of peace, war, and social conflict; social movements; Israel-Palestine
- **Dr. Amanda Konradi,** Associate Professor
 - Deviance, criminal justice, gender, rare disease
- **Dr. Nicole A. Shoenberger,** Assistant Professor
 - Criminal justice, deviance, criminological theory, delinquency, and research methods



SOCIOLOGY FACULTY (CONT.)

- **William Sheppard, MA**, Affiliate Instructor
 - Ethnicity, race, and religion in historic archaeology; cultural anthropology
- **Dr. Christopher Turner**, Lecturer
 - Medical sociology, mental health, qualitative methods

LOYOLA SOCIOLOGY CURRICULUM: YOUR INTRODUCTION TO THE FIELD



SC 100 Introduction to Sociology: The fundamentals of sociological inquiry, including the history of the discipline, primary theories, and methods.

LOYOLA SOCIOLOGY CURRICULUM BEYOND THE INTRODUCTION

A research methods course

provides a systematic introduction to the basic skills of sociological analysis.

A theory course

introduces students to classical, modern and contemporary theories.

Two upper-level courses

provide in-depth exploration of topics.

A junior/senior seminar

works toward synthesis.

Four additional electives encourage students to pursue their own special interests.

A practicum helps students develop career relevant skills.

RESEARCH METHODS



SC342: An introduction to the logic, ethics, and techniques of social research.

Elective: Advanced Survey Design and Analysis

Elective: Advanced Qualitative Sociological Inquiry

A.U7.V1

Determine whether the situation described is a survey, an experiment, or an observational study. Then identify the **sample**, and suggest a **population** from which it may have been selected.

A record label wants to test three designs for an album cover. They randomly select 50 teenagers from local high schools to view the covers while they watch and record their reactions.

Ob. Study

Sample: 50 teenagers

Population: all teenagers or all potential cons.

The city council wants to start a recycling program. They send out a questionnaire to 200 random citizens asking what items they would recycle.

THEORY AND PRACTICE

**Sociological
theory: An
overview of
classical,
modern, and
contemporary
theories**

Functionalism

Marxian
theory

Symbolic
interactionalism

Globalization
theory

Feminist
theory

Postmodern
theory

and
others!

ELECTIVES - U.S. FOCUSED

- **SC 100** Introduction to Sociology
- **SC 201** Self and Society
- **SC 202** Social Power and Social Change
- **SC 204** The Family
- **SC 205** Education in U.S. Society
- **SC 206** Health and Society
- **SC 207** Social Problems
- **SC 210** Introduction to Gender and Sexuality Studies
- **SC 214** Introduction to Social Work
- **SC 221** Sociology of Race, Class, and Gender
- **SC 233** Juvenile Delinquency
- **SC 260** Introduction to Criminal Justice



ELECTIVES - U.S. FOCUSED



- **SC 266** Sociology of Cinema: Sex, Violence, and Identity
- **SC 276** Human Health and the Environment
- **SC 309** Child Welfare
- **SC 330** Forensics
- **SC 331** Deviance and Social Control
- **SC 332** The Sociology of Crime and Criminals
- **SC 334** Sociology of Policing
- **SC 360** Critical Analysis of Criminal Justice Outcomes
- **SC 361** Social Inequality
- **SC 365** Neighborhood and Community in Urban America
- **SC 366** Sociology of Sexuality
- **SC 368** Masculinities
- **SC 369** Mining the Gap: Determinants of Educational Outcomes
- **SC 371** Sociology of Serial and Mass Murder

ELECTIVES - INTERNATIONAL



- **SC 203** Globalization and Society
- **SC 209** Cultural Anthropology
- **SC 224** Sociology of Religion
- **SC 339** Conflict, War, and Peace
- **SC 362** Global Inequalities
- **SC 364** Sociology of Health, Illness, and Medicine
- **SC 373** Sociology of Human Rights
- **SC 374** Sociology of Development
- **SC 376** Israel-Palestine: Conflict Narratives, Media Framing, and Peace-Building
- **SC 377** Social Movements and Social Protest
- **SC 378** Islam and Politics
- **SC 379** Israel-Palestine: Roots of the Conflict and Prospects for Peace

TOPICAL ELECTIVE SEMINARS FOR JUNIORS AND SENIORS

- **SC 420** Race, Class, and Social Construction of Opportunity
- **SC 421** Race, Class, Gender, Sexuality
- **SC 424** Privilege and Inequality in Education
- **SC 430** Gender and Justice
- **SC 434** Women and Deviance
- **SC 435** Forensic Sociology
- **SC 440** Global Sociology
- **SC 441** Conflict and Reconciliation in Divided Societies



STUDY ABROAD EXPANDS YOUR UNDERSTANDING OF SOCIETY!

WE ENCOURAGE IT!

- Experience everything Loyola has to offer!
- Almost all programs serve Sociology.
- Here are some highlights!
 - Copenhagen, Denmark
 - Study tours and field study visits included in academics
 - Leuven, Belgium
 - Designed for Humanities and Social Sciences
 - Bangkok, Thailand
 - Designed for all majors



Copenhagen



Leuven



Bangkok

SOCIOLOGY OFFERS AN INTERNSHIP EACH SPRING.

STUDENTS BENEFIT IN MANY WAYS.



Gain experience related to future employment



Establish a track record of work habits and attitudes



Develop professional skills and competence in areas including agency research, practice intervention, policy formation and development, etc.



Determine how well-suited you are in terms of skill and personality to particular kinds of work



Integrate sociological theory and analysis with practical experience accrued in a concrete work setting



Discuss professional issues and concerns that are not covered in other courses

Funds are available to assist students with transportation.

STUDENTS SECURE PLACEMENTS IN A RANGE OF AREAS



Law and Criminal
Justice



Social Work



Human Resources,
Development, and
Public Relations



Preventing Violence
Against Women



Education
Counseling and
Children/Youth

LOYOLA SOCIOLOGY FACULTY SUPPORT STUDENT RESEARCH

Sociology faculty offer:

- Independent studies for students to explore new areas of literature.
- Research credits for students to design and implement studies.
- An opportunity for students to participate in faculty projects.

STUDENT RESEARCH



(Photo: At ESS, Joe Kropff '14 presents, while Dominic Walker '13 looks on.)

- Sociology students present their research and compete for cash prizes at the **Loyola Undergraduate Student Research & Scholarship Colloquium**.
- The **Eastern Sociological Society** (ESS) sponsors a four-day Annual Meeting in the early spring. Loyola sociology students submit posters.

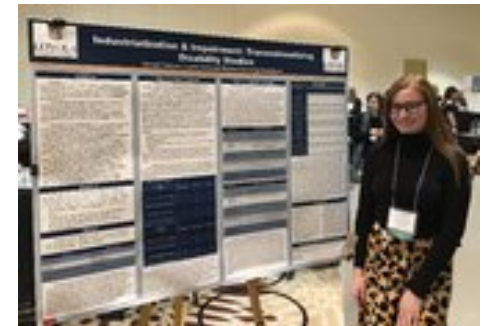
EASTERN SOCIOLOGICAL SOCIETY 2020

LOYOLA SOCIOLOGY STUDENT PRESENTERS



Cierra Thurmond & Amanda Debold

Hector Trujillo



Hannah Tubman

LOYOLA SOCIOLOGY CLUB: ANNUAL EVENTS

- Open to all students!
- Resume Workshop
 - Sociology faculty work with majors and minors to develop resumes that sell their unique skills.
- Holiday Dinner
- Career Night
 - Loyola Sociology alumni in various professions (law, teaching, social work, business, etc.) share their career trajectories and tips for success.



OUR MOST TALENTED STUDENTS ARE INVITED TO JOIN ALPHA KAPPA DELTA

AKD is an international sociology society dedicated to promoting, facilitating, and recognizing academic scholarship.

Benefits of activated membership:

- Recognition at graduation (AKD members wear teal honor cords).
- A free one-year subscription to *Sociological Inquiry*.
- Funds to travel to sociology conferences to present research.
- Student paper competitions.

Requirements:

- Junior or Senior Sociology Major/Minor
- Completed 4+ Sociology Courses
- Overall GPA of 3.3 and Sociology GPA of 3.0



**WE ARE READY
FOR YOU!**
**COME JOIN
OUR PROGRAM.**

Contact Information

Sociology Department
Beatty Hall 238A
Loyola University Maryland
4501 N. Charles St.
Baltimore, MD 21210
Phone: 410-617-2742