

Loyola University Maryland
Counselor Preparation Comprehensive Examination (CPCE)
Version #100115
October 2017

Descriptives		Items	N	Mean	SD	Min	Max
C1	Human Growth and Development	17	28	11.1	2.1	7	14
C2	Social and Cultural Diversity	17	28	10.7	2	8	15
C3	Counseling and Helping Relationships	17	28	11.9	2	7	17
C4	Group Counseling and Group Work	17	28	11.7	1.9	9	15
C5	Career Development	17	28	9.3	2.3	5	14
C6	Assessment and Testing	17	28	10.7	2.3	2	13
C7	Research and Program Evaluation	17	28	11	2.6	6	15
C8	Professional Counseling Orientation and Ethical Practice	17	28	10.8	2.6	3	16

**Counselor Preparation Comprehensive Examination (CPCE)
National Descriptive Statistics
100115
Exit Exam**

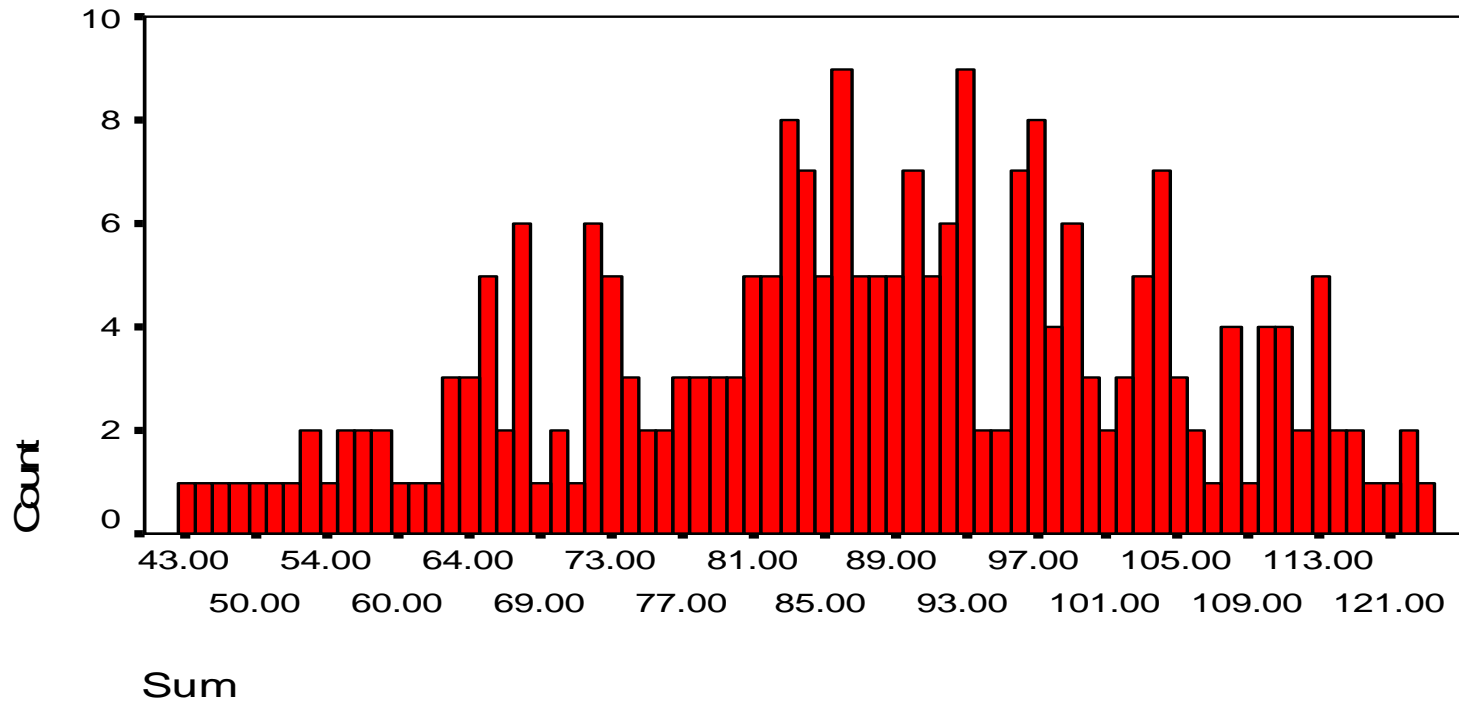
National Descriptive Statistics

<u>Content Area</u>	<u>N</u>	<u>Minimum</u>	<u>Maximum</u>	<u>Mean</u>	<u>Std. Dev.</u>
Human Growth and Development	237	2	16	11.62	2.83
Social & Cultural Diversity	237	5	16	10.30	2.65
Helping Relationships	237	4	17	11.94	2.80
Group Work	237	3	17	10.84	2.94
Career Development	237	2	16	9.38	2.57
Assessment	237	3	16	10.63	2.29
Research & Program Evaluation	237	1	17	11.04	3.18
Professional Orientation & Ethical Practice	237	5	17	11.38	2.46
Average	237	3.13	16.50	10.89	2.72

Total	237	43	123	87.13	16.79

CPCE Exit Exam 100115

Frequency Bar Chart



N = 237 Mean = 87.13 Standard Deviation = 16.79 Minimum = 43 Maximum = 123

National Frequency Report CPCE Exit Exam 100115

Score	Frequency	Percent	Cumulative Percent
43	1	.4	.4
45	1	.4	.8
48	1	.4	1.3
49	1	.4	1.7
50	1	.4	2.1
51	1	.4	2.5
52	1	.4	3.0
53	2	.8	3.8
54	1	.4	4.2
55	2	.8	5.1
56	2	.8	5.9
59	2	.8	6.8
60	1	.4	7.2
61	1	.4	7.6
62	1	.4	8.0
63	3	1.3	9.3
64	3	1.3	10.5
66	5	2.1	12.7
67	2	.8	13.5
68	6	2.5	16.0
69	1	.4	16.5
70	2	.8	17.3
71	1	.4	17.7
72	6	2.5	20.3
73	5	2.1	22.4
74	3	1.3	23.6
75	2	.8	24.5
76	2	.8	25.3
77	3	1.3	26.6
78	3	1.3	27.8
79	3	1.3	29.1
80	3	1.3	30.4
81	5	2.1	32.5
82	5	2.1	34.6
83	8	3.4	38.0
84	7	3.0	40.9
85	5	2.1	43.0

National Frequency Report CPCE Exit Exam 100115

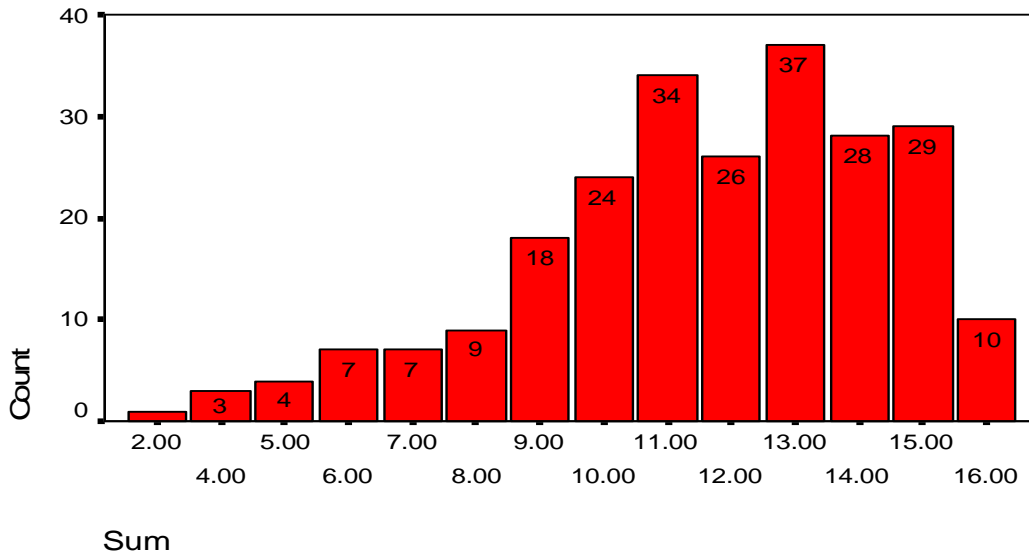
Score	Frequency	Percent	Cumulative Percent
86	9	3.8	46.8
87	5	2.1	48.9
88	5	2.1	51.1
89	5	2.1	53.2
90	7	3.0	56.1
91	5	2.1	58.2
92	6	2.5	60.8
93	9	3.8	64.6
94	2	.8	65.4
95	2	.8	66.2
96	7	3.0	69.2
97	8	3.4	72.6
98	4	1.7	74.3
99	6	2.5	76.8
100	3	1.3	78.1
101	2	.8	78.9
102	3	1.3	80.2
103	5	2.1	82.3
104	7	3.0	85.2
105	3	1.3	86.5
106	2	.8	87.3
107	1	.4	87.8
108	4	1.7	89.5
109	1	.4	89.9
110	4	1.7	91.6
111	4	1.7	93.2
112	2	.8	94.1
113	5	2.1	96.2
114	2	.8	97.0
115	2	.8	97.9
116	1	.4	98.3
121	1	.4	98.7
122	2	.8	99.6
123	1	.4	100.0
Total	237	100.0	

**CACREP Content Area Frequency Tables
Human Growth and Development Exit Exam 100115**

Score	Frequency	Percent	Cumulative Percent
2	1	.4	.4
4	3	1.3	1.7
5	4	1.7	3.4
6	7	3.0	6.3
7	7	3.0	9.3
8	9	3.8	13.1
9	18	7.6	20.7
10	24	10.1	30.8
11	34	14.3	45.1
12	26	11.0	56.1
13	37	15.6	71.7
14	28	11.8	83.5
15	29	12.2	95.8
16	10	4.2	100
Total	237	100	

Human Growth & Development

Exit Exam 100115



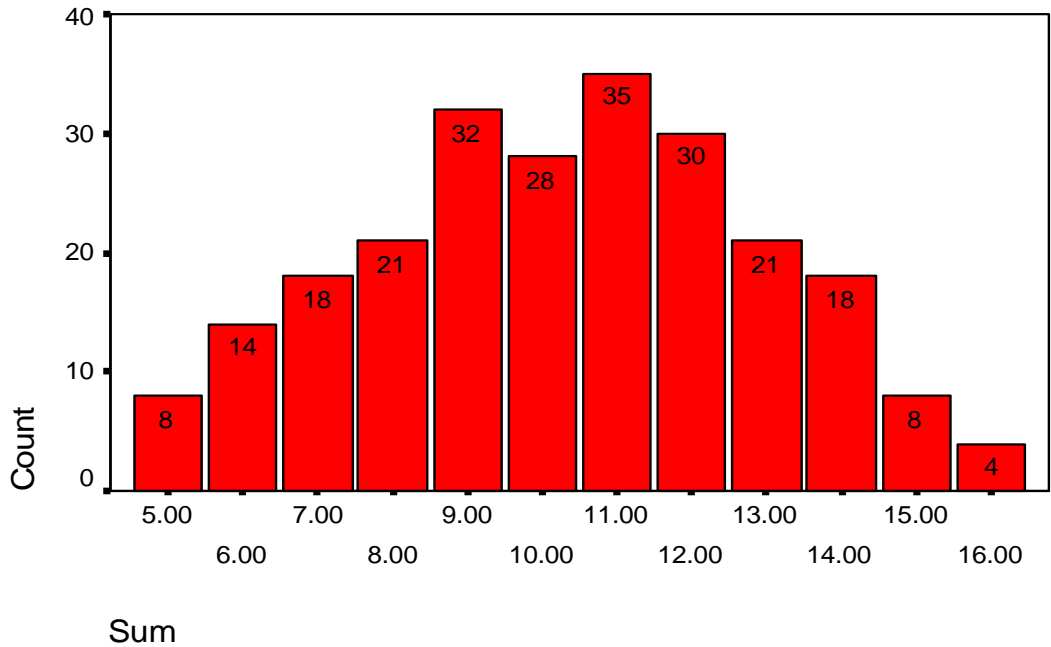
N = 237 Mean = 11.62 Standard Deviation = 2.83 Minimum = 2 Maximum = 16

**CACREP Content Area Frequency Tables
Social and Cultural Diversity Exit Exam 100115**

Score	Frequency	Percent	Cumulative Percent
5	8	3.4	3.4
6	14	5.9	9.3
7	18	7.6	16.9
8	21	8.9	25.7
9	32	13.5	39.2
10	28	11.8	51.1
11	35	14.8	65.8
12	30	12.7	78.5
13	21	8.9	87.3
14	18	7.6	94.9
15	8	3.4	98.3
16	4	1.7	100
Total	237	100	

Social and Cultural Diversity

Exit Exam 100115



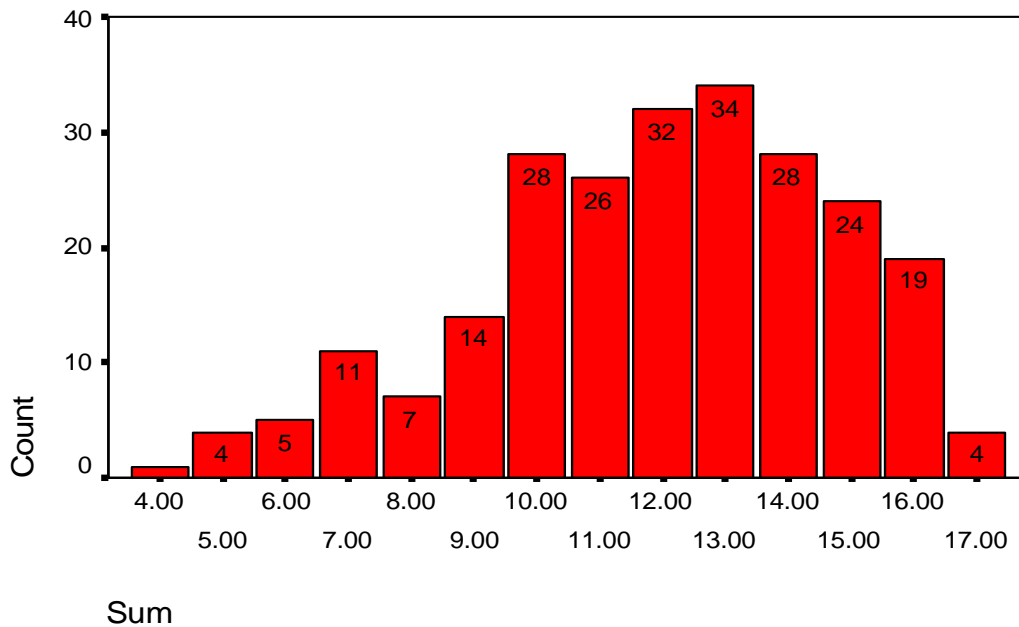
N = 237 Mean = 10.30 Standard Deviation = 2.65 Minimum = 5 Maximum = 16

**CACREP Content Area Frequency Tables
Helping Relationships Exit Exam 100115**

Score	Frequency	Percent	Cumulative Percent
4	1	.4	.4
5	4	1.7	2.1
6	5	2.1	4.2
7	11	4.6	8.9
8	7	3.0	11.8
9	14	5.9	17.7
10	28	11.8	29.5
11	26	11.0	40.5
12	32	13.5	54.0
13	34	14.3	68.4
14	28	11.8	80.2
15	24	10.1	90.3
16	19	8.0	98.3
17	4	1.7	100
Total	237	100	

Helping Relationships

Exit Exam 100115



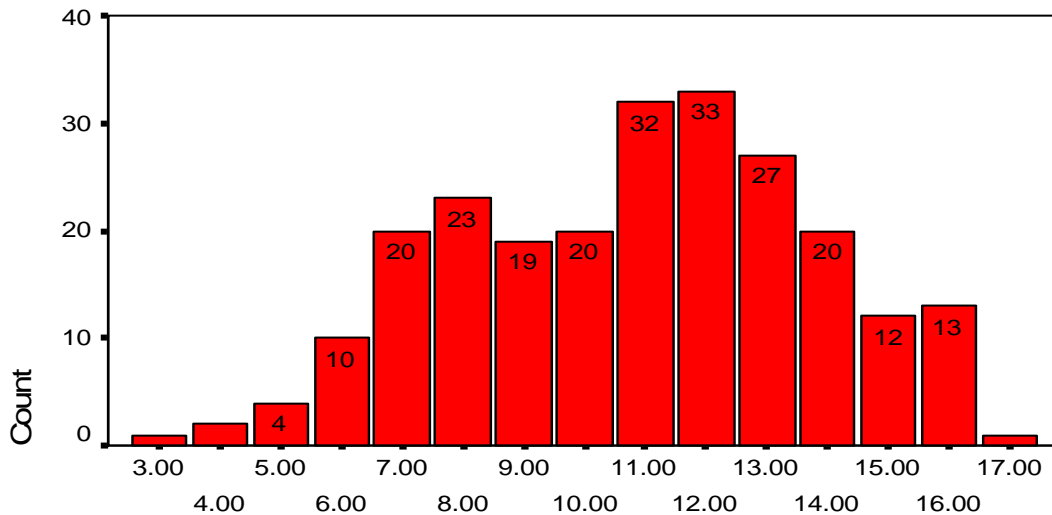
N = 237 Mean = 11.94 Standard Deviation = 2.80 Minimum = 4 Maximum = 17

**CACREP Content Area Frequency Tables
Group Work Exit Exam 100115**

Score	Frequency	Percent	Cumulative Percent
3	1	.4	.4
4	2	.8	1.3
5	4	1.7	3.0
6	10	4.2	7.2
7	20	8.4	15.6
8	23	9.7	25.3
9	19	8.0	33.3
10	20	8.4	41.8
11	32	13.5	55.3
12	33	13.9	69.2
13	27	11.4	80.6
14	20	8.4	89.0
15	12	5.1	94.1
16	13	5.5	99.6
17	1	.4	100
Total	237	100	

Group Work

Exit Exam 100115



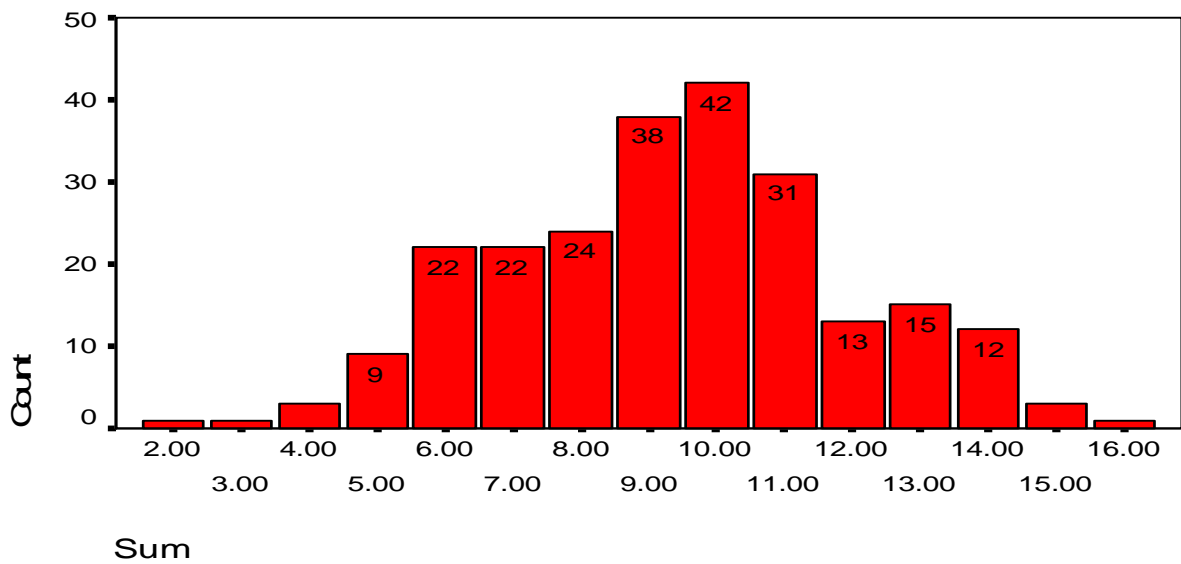
Sum

N = 237 Mean = 10.84 Standard Deviation = 2.94 Minimum = 3 Maximum = 17

**CACREP Content Area Frequency Tables
Career Development Exit Exam 100115**

Score	Frequency	Percent	Cumulative Percent
2	1	.4	.4
3	1	.4	.8
4	3	1.3	2.1
5	9	3.8	5.9
6	22	9.3	15.2
7	22	9.3	24.5
8	24	10.1	34.6
9	38	16.0	50.6
10	42	17.7	68.4
11	31	13.1	81.4
12	13	5.5	86.9
13	15	6.3	93.2
14	12	5.1	98.3
15	3	1.3	99.6
16	1	.4	100.0
Total	237	100.0	

**Career Development
Exit Exam 100115**



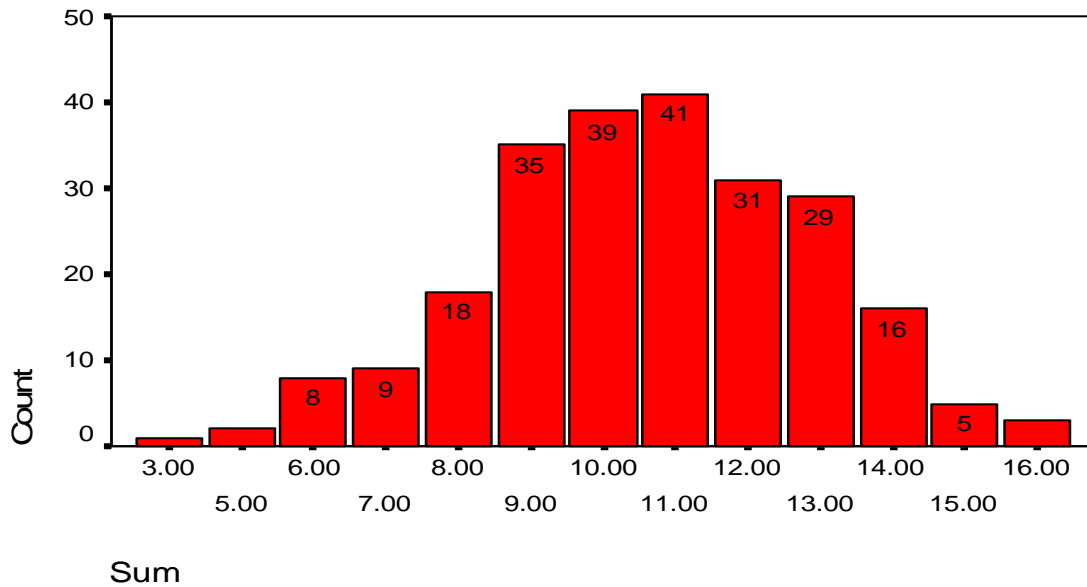
N = 237 Mean = 9.38 Standard Deviation = 2.57 Minimum = 2 Maximum = 16

CACREP Content Area Frequency Tables
Assessment Exit Exam 100115

Score	Frequency	Percent	Cumulative Percent
3	1	.4	.4
5	2	.8	1.3
6	8	3.4	4.6
7	9	3.8	8.4
8	18	7.6	16.0
9	35	14.8	30.8
10	39	16.5	47.3
11	41	17.3	64.6
12	31	13.1	77.6
13	29	12.2	89.9
14	16	6.8	96.6
15	5	2.1	98.7
16	3	1.3	100.0
Total	237	100.0	

Assessment

Exit Exam 100115



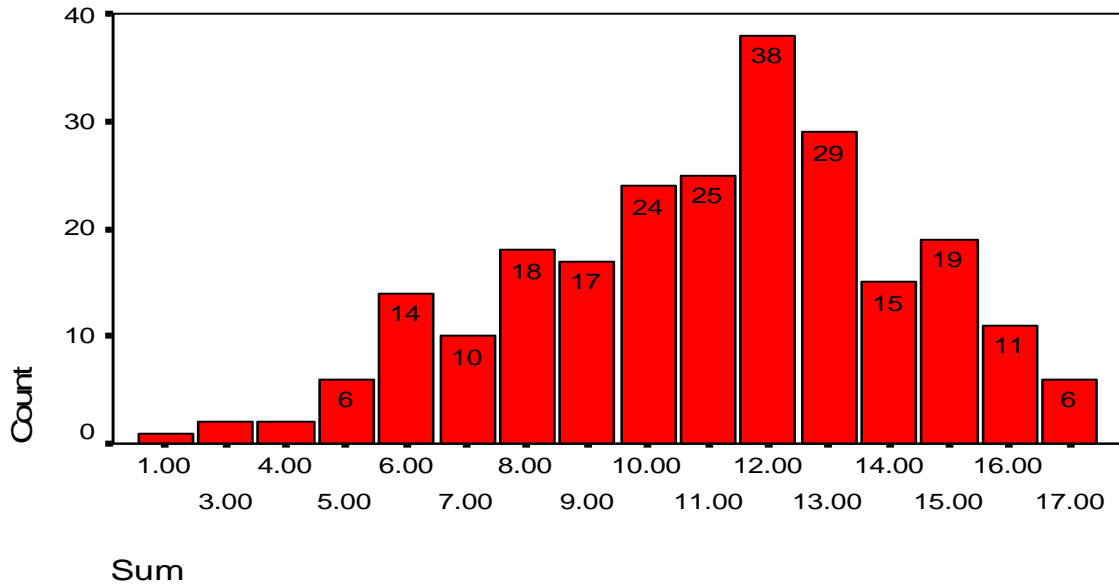
N = 237 Mean = 10.63 Standard Deviation = 2.29 Minimum = 3 Maximum = 16

**CACREP Content Area Frequency Tables
Research & Program Evaluation Exit Exam 100115**

Score	Frequency	Percent	Cumulative Percent
1	1	.4	.4
3	2	.8	1.3
4	2	.8	2.1
5	6	2.5	4.6
6	14	5.9	10.5
7	10	4.2	14.8
8	18	7.6	22.4
9	17	7.2	29.5
10	24	10.1	39.7
11	25	10.5	50.2
12	38	16.0	66.2
13	29	12.2	78.5
14	15	6.3	84.8
15	19	8.0	92.8
16	11	4.6	97.5
17	6	2.5	100.0
Total	237	100.0	

Research and Program Evaluation

Exit Exam 100115

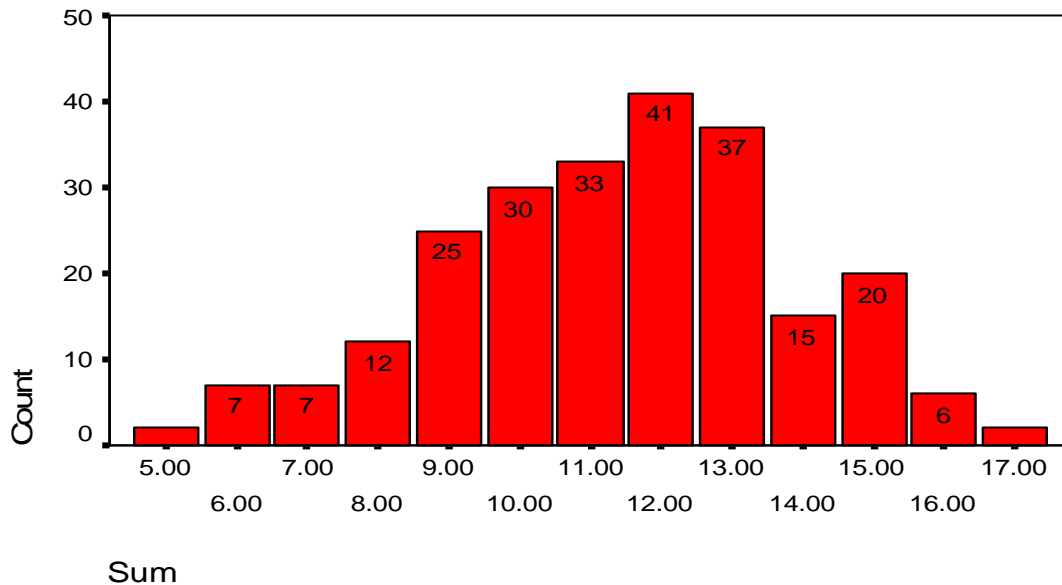


N = 237 Mean = 11.04 Standard Deviation = 3.18 Minimum = 1 Maximum = 17

CACREP Content Area Frequency Tables
Professional Orientation & Ethical Practice Exit Exam 100115

Score	Frequency	Percent	Cumulative Percent
5	2	.8	.8
6	7	3.0	3.8
7	7	3.0	6.8
8	12	5.1	11.8
9	25	10.5	22.4
10	30	12.7	35.0
11	33	13.9	48.9
12	41	17.3	66.2
13	37	15.6	81.9
14	15	6.3	88.2
15	20	8.4	96.6
16	6	2.5	99.2
17	2	.8	100.0
Total	237	100.0	

Professional Orientation & Ethical Practice
Exit Exam 100115



N = 237 Mean = 11.38 Standard Deviation = 2.46 Minimum = 5 Maximum = 17